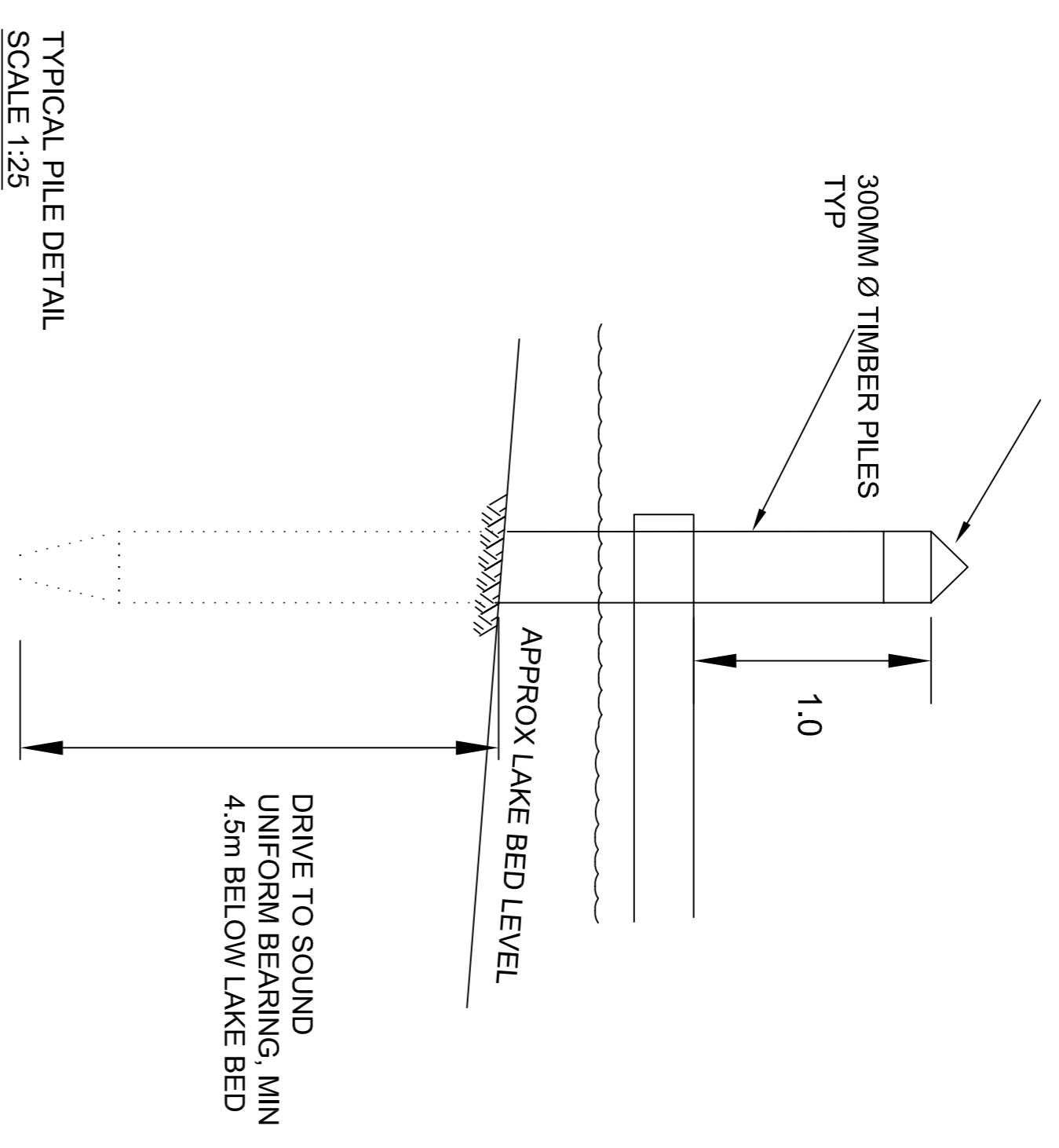
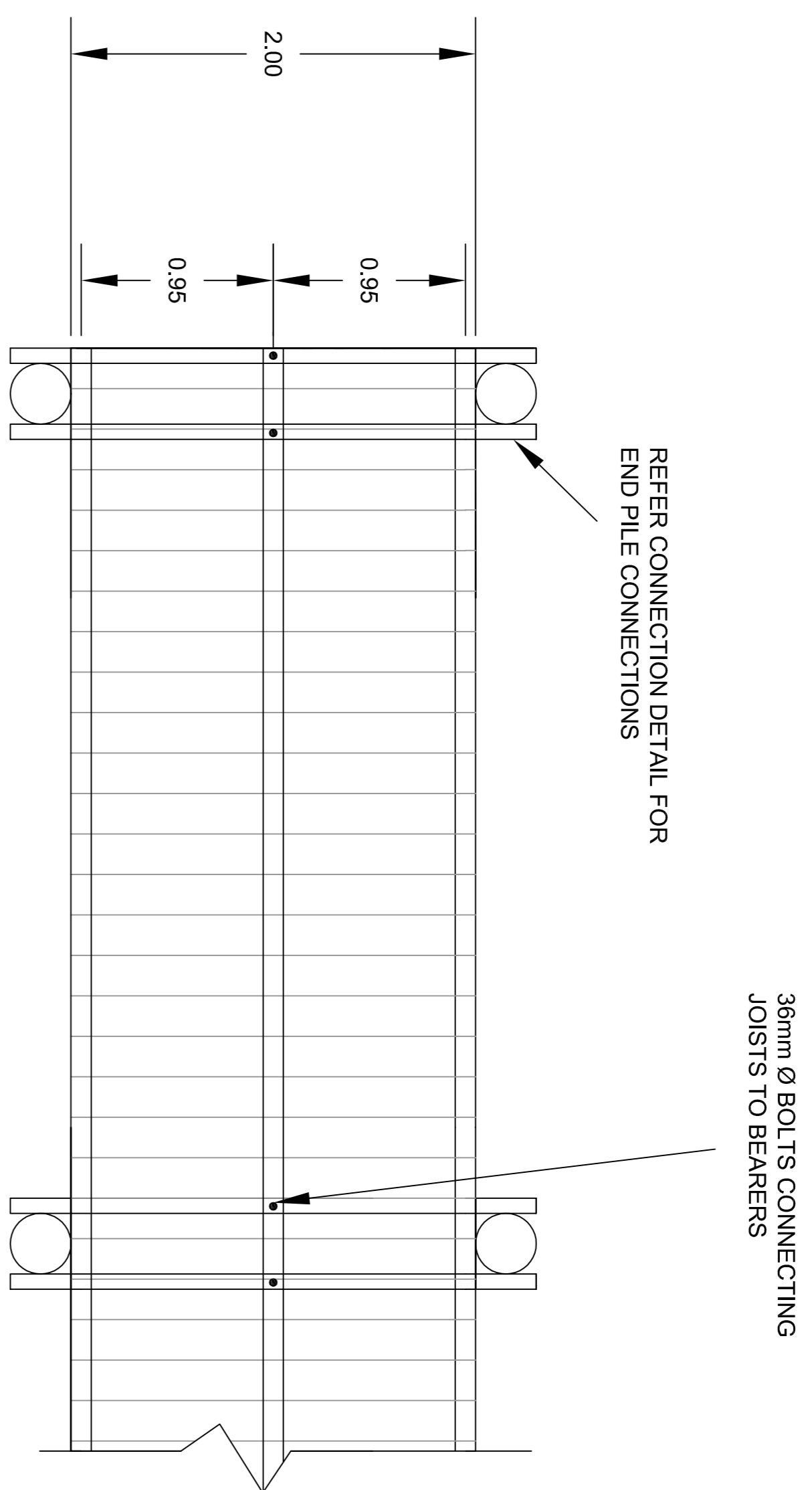
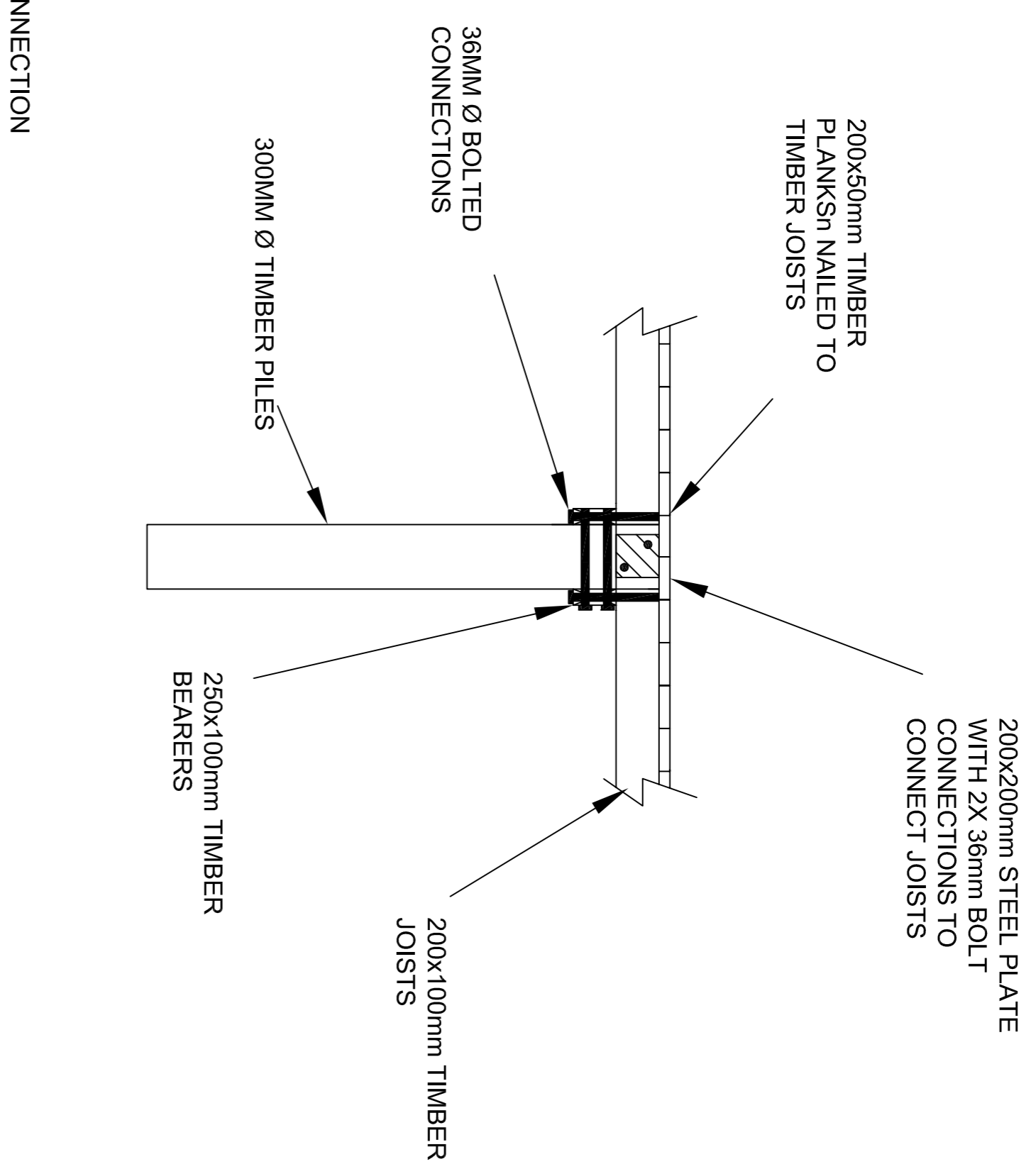
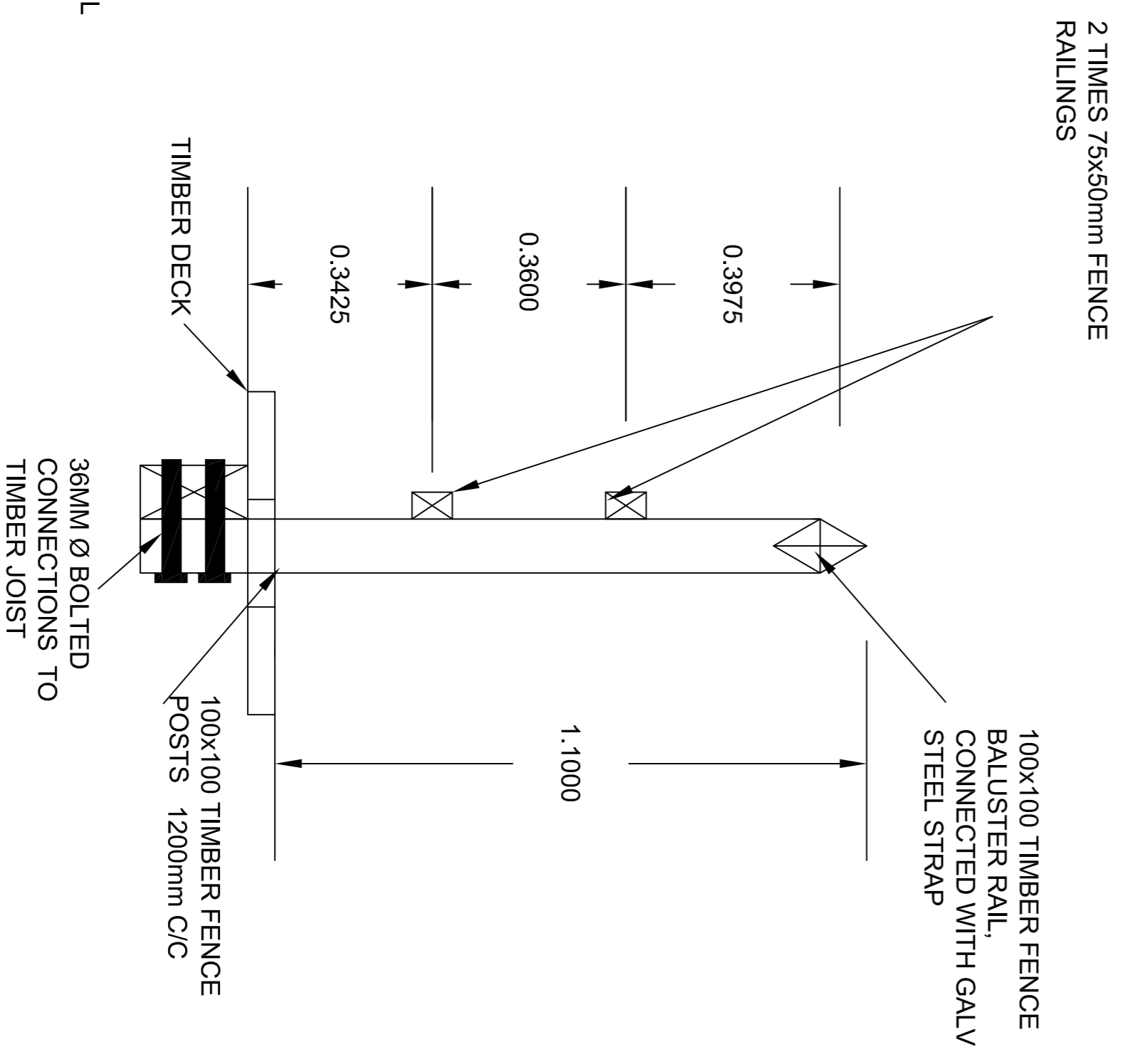


MARINE DOCK SYSTEMS
AUSTRALIA - PART NO.
FILE315-383, OR SIMILAR

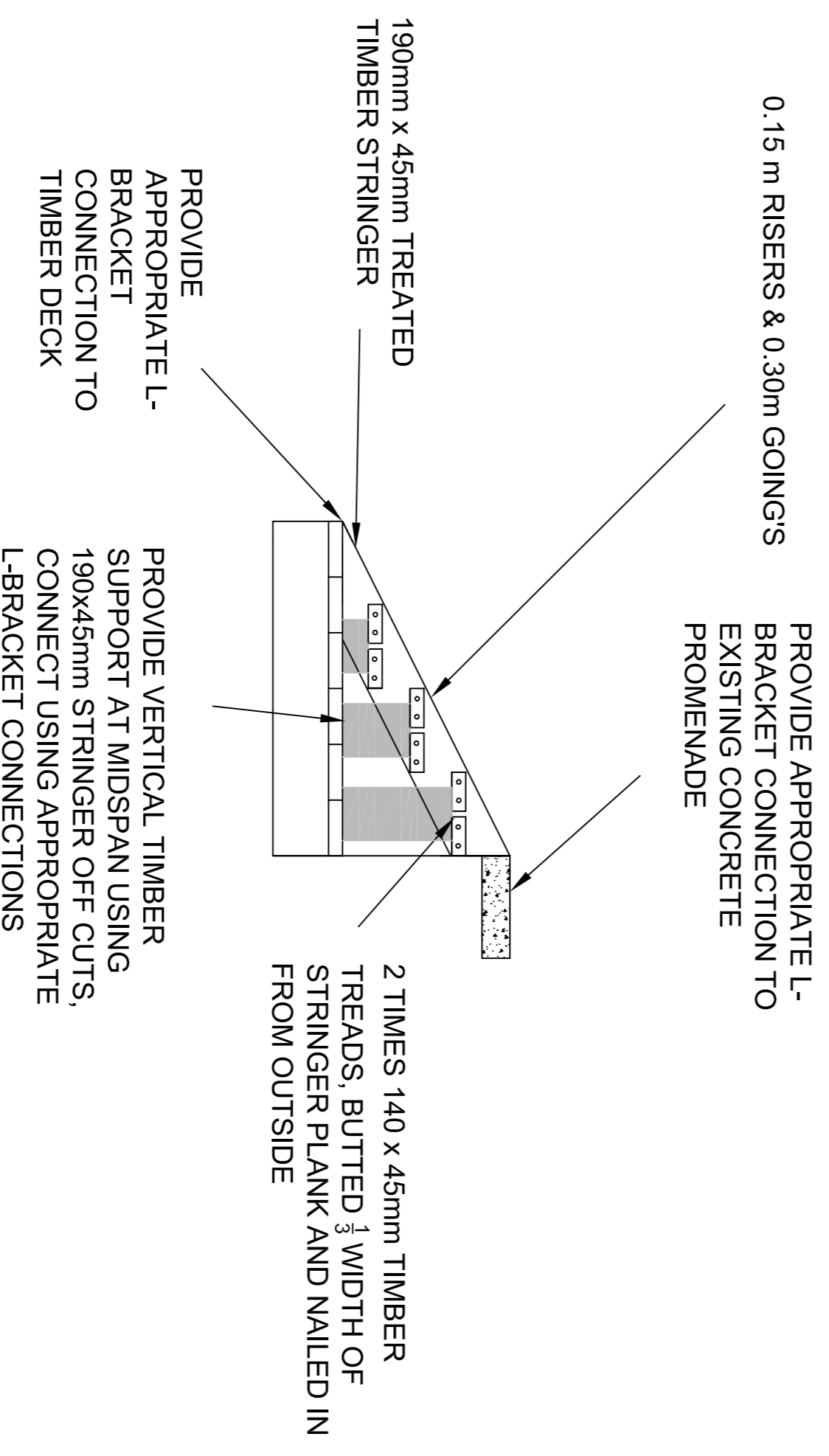


TYPICAL PILE DETAIL
SCALE 1:25

TIMBER CONNECTION
DETAILS SCALE 1:25



TIMBER FENCE DETAIL
SCALE 1:10



TIMBER STAIR CASE
DETAILS SCALE 1:20

TIMBER FENCE DETAIL
SCALE 1:10

SCALES: AT A1	AS SHOWN	DATE 08/05/09	ORIGIN OF LEVELS SERVICE LOCATIONS	EROSION CRITERION	<p>SHELLHARBOUR CITY COUNCIL ADMINISTRATION CENTRE: LAMERTON HOUSE, LAMERTON CRESCENT P.O. BOX 555, SHELLHARBOUR SQUARE SHELLHARBOUR CITY CENTRE, 2529 SHELLHARBOUR CITY CENTRE FAX: (02) 4271 5106 DX 25402 SHELLHARBOUR SQUARE</p>		<p>PLAN DETAILS</p> <p>SKI WAY PARK – OAKFLATS PROPOSED TIMBER JETTY</p>		DESIGN ENGINEER	SHEET No.:
DATUM	SURVEYED	DESIGNED	M.KLOPPER	<p>Services shown are those known to exist at the time of excavation contract AGL, Energy, Sydney Water and Restraint for recent locations and precautions that may be necessary.</p> <p>Provide additional and erosion control measures in accordance with the Urban Erosion and Sediment Control Guide. By the Department of Land Management.</p>					FILE:	REVISION

DATUM	SURVEYED	DESIGNED	M.KLOPPER	P.M	16881	<p>Services shown are those known to exist at the time of excavation contract AGL, Energy, Sydney Water and Restraint for recent locations and precautions that may be necessary.</p> <p>Provide additional and erosion control measures in accordance with the Urban Erosion and Sediment Control Guide. By the Department of Land Management.</p>	<p>SHELLHARBOUR CITY COUNCIL ADMINISTRATION CENTRE: LAMERTON HOUSE, LAMERTON CRESCENT P.O. BOX 555, SHELLHARBOUR SQUARE SHELLHARBOUR CITY CENTRE, 2529 SHELLHARBOUR CITY CENTRE FAX: (02) 4271 5106 DX 25402 SHELLHARBOUR SQUARE</p>	<p>PLAN DETAILS</p> <p>SKI WAY PARK – OAKFLATS PROPOSED TIMBER JETTY</p>	FILE:	REVISION	PLAN No.:
LEVEL BOOK	FIELD BOOK	DRAWN	M.KLOPPER	B.M	7.945m AHD		<p>W:\DESIGN PROJECTS\2008-09\SKIMWAY PARK</p>	A	3E43		