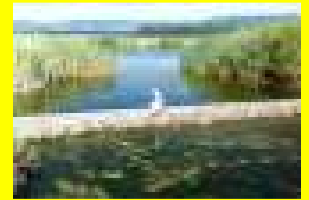


LAKE ILLAWARRA AUTHORITY COMMUNITY NEWSLETTER



March 2004

SOUTHERN BACK CHANNEL

Background

The Back Channel area west of Picnic Island and extending to Cudgeree Island and south of Bevans Island to Whyjuck Bay and beyond, has suffered ongoing deterioration as being evidenced by weed/algae accumulations and poor water circulation. The Back Channel is an important area for fish habitat and it serves as a resting area for water and wader birds.



*Aerial photograph of the Back Channel 1948
prior to causeway construction*

The LIA was granted funding from the state government in 2003 to examine the area for possible improvement. Consultant Webb McKeown are working with the LIA to investigate the area and the benefits that may arise from channel improvements.

Back Channel Community Consultative Committee

A Community Consultative Committee has been established to ensure community participation in the review process. Advertisements were placed in the local media for nominations from interested persons to be part of the Back Channel Community Consultative Committee.

The Committee was formed in November 2003 and has representation from the commercial fishing industry, local residents, Neighbourhood Committee No 10, South Coast Conservation Society, the Illawarra Bird Observers Club, Save Lake Illawarra Action Group, Wollongong and Shellharbour City Councils and a number of government agencies.

The Committee met for the first time on 10 December 2003. The meeting was chaired by an independent facilitator. The Committee was given details on the background to the project and members had the opportunity to discuss relevant issues and concerns.

The Committee will provide valuable feed back to the Lake Illawarra Authority and will report to the Authority on possible Options for the future having regard to social, environmental and economic considerations. Possible outcomes could be limited dredging, channel realignment or perhaps to leave the area unchanged.

A draft report is being prepared by the Committee and is expected to be completed by the end of April 2004 for presentation to the Authority.



*Aerial photograph of the Back Channel
(shaded yellow) February 2003*

REDDALL RESERVE, LAKE ILLAWARRA

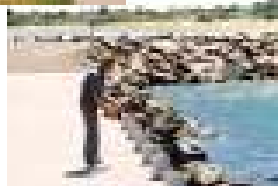


Project Summary

The Lake Illawarra Authority, with funding support from Shellharbour City Council, is progressing well with the improvements to Reddall Reserve.

Stage 2 of the works now in construction includes:

- ◆ provision of a shared pathway
- ◆ block retaining wall,
- ◆ car park areas
- ◆ refurbishment of the existing toilet block
- ◆ a children's playground
- ◆ tables, seats and shelters
- ◆ BBQs



Stage 3 including lighting and landscaping works will commence when funding becomes available.

LAKE ILLAWARRA AUTHORITY

NAME	Interests/Affiliations
Doug Prosser	Community/Environment
Bob Doyle	Tourism
May Hudson	Community/Environment
Jean Ferguson	Community/Environment
Cl Leon Cicolini*	Shellharbour City Council
Cl Kiril Jonovski*	Wollongong City Council
Andrew Field	NSW Fisheries

* Subject to forthcoming local government elections

COMMUNITY REPRESENTATIVES ON SUB COMMITTEES

Independent Review Panel on Lake Illawarra Entrance (Reported late 2003)

Professor Bruce Thom	Coastal Council of NSW
Professor John Morrison	Environmental Science Wollongong University
Mike Geary	Engineer
Barry Hennessy	Community Rep
Karen Taverner Smith	Healthy Cities
Alan Washbourne	Community Rep
Brian Dooley	DIPNR

Bevans Island Back Channel Advisory Committee

Russell Massey	Community Representatives
Anne Dempsey	
Bob Parsons	
Col Wilton	
Chris Brandis	
Paul Cosmos	
Barry Hennessy	

Floodplain Management Committee

Doug Prosser	Community Representatives
Shirley Massey	
Phil Symonds	
Gordon Cooke	
Alan Washbourne	
Bruce Carter	

Management Plan Advisory Committee

Phil Symonds	Community Representatives
Alan Washbourne	
Bruce Carter	
T Howard	
Shirley Massey	
Doug Prosser	
Peggy Stransky	

For further details of Committee members contact Pam Outtrim on 4224 9633